

Automatic Air Release Valve

MODEL MVC - 15

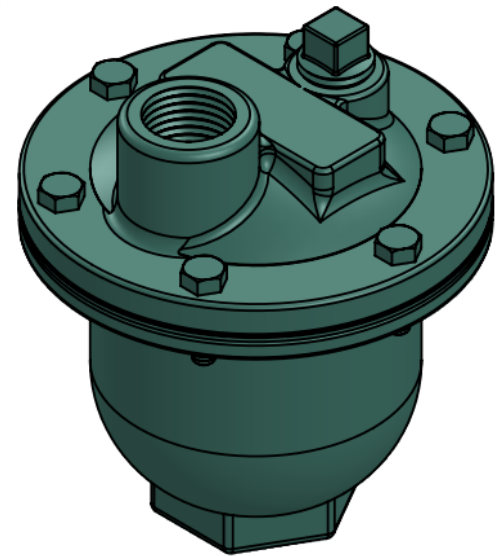
General Product Specifications :

- A. Automatic Air Release Valves shall be float operated and designed to release accumulated air from high points in a piping system while the system is in operation and under pressure.
- B. Air Release Valves suitable for water service
- C. Automatic Air Release Valve shall be installed at system high points and where indicated by system designer.
- D. When installed in finished areas and when specified, valve discharge can be piped to drain

Typical Applications

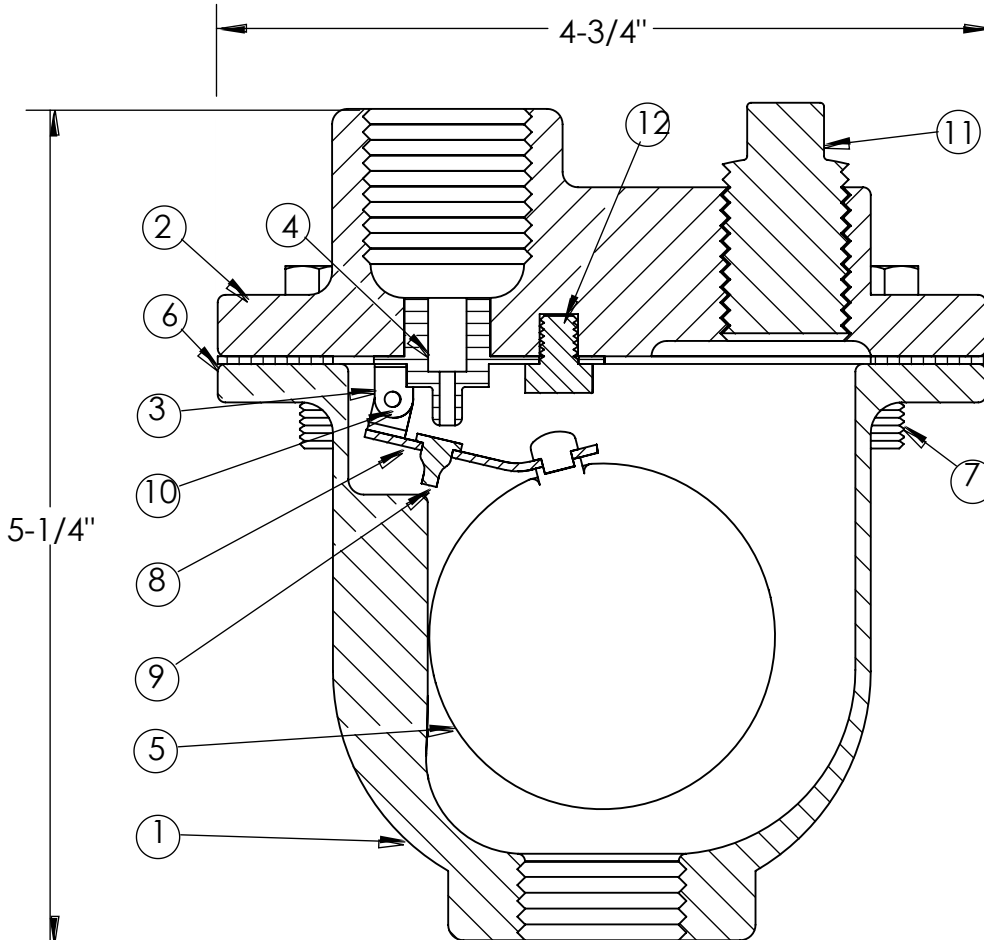
- Wet sprinkler systems
- Diesel fire pumps
- wet pilot line

- The valve body and cover shall be constructed of ASTM A126 Class B cast iron for working pressures up to 300 psig at 150 deg F.
- The orifice and linkage shall be constructed of SAE 30303 Stainless Steel. The float shall be ASTM A0240 Stainless Steel.
- The orifice seal button shall be flouroelastomer.
- The cover shall be bolted to the valve body and sealed with a flat gasket. Resilient seats shall be replaceable and provide drop tight shut off to the full valve pressure rating.
- Valves shall have FNPT threaded inlets and outlets. The body inlet connection shall be hexagonal for a wrench connection.
- The valve shall have an additional NPT connection for the addition of gauges, testing, startup filling and system draining.



Automatic Air Release Valve

MODEL MVC - 15



PART	PART NAME	MATERIAL	PART	PART NAME	MATERIAL
1	BODY	CAST IRON A126	7	COVER BOLT	CARBON STEEL
2	COVER	CAST IRON A126	8	FLOAT ARM	STAINLESS STEEL
3	LEVER FRAME	STAINLESS STEEL	9	ORIFICE BUTTON	FLUOROELASTOMER
4	SEAT	STAINLESS STEEL	10	PIVOT PIN/RETAINER	STAINLESS STEEL
5	FLOAT	STAINLESS STEEL	11	PIPE PLUG (0.5")	STAINLESS STEEL
6	GASKET	NON ASBESTOS	12	LOCATOR	STAINLESS STEEL

SIZE	PART NUMBER	MAX TEMP	INLET SIZE	OUTLET SIZE	ORIFICE SIZE	WT (LBS)
1/2" (15mm)	MVC150050	250°F	1/2" NPT	1/2" NPT	1/16"	5-1/2
3/4" (20mm)	MVC150075	250°F	3/4" NPT	1/2" NPT	1/16"	5-1/2
1" (25mm)	MVC150100	250°F	1" NPT	1/2" NPT	1/16"	5-1/2

NSF 372 - LEAD FREE

The wetted surface of this product contacted by consumable water contains less than one quarter of one percent (0.25%) of lead by weight. Material complies with state codes and standards, where applicable, requiring reduced lead content.

Automatic Air Release Valve Model mvc-15

OPERATION, INSTALLATION AND MAINTENANCE INSTRUCTIONS

GENERAL: The Air Release Valves are fully automatic valves and require no regular maintenance.

The purpose of the “Air Release Valves” is to release air which accumulates in a pipeline during its operation.

OPERATION: The valve, as shipped, is a normally open valve. As the system is being filled, air is vented through the small orifice. When the fluid enters the valve, the float raises and shuts off the orifice, preventing any leakage. As air accumulates and enters the valve, displacing fluid, the float drops, allowing the venting orifice to open. This cycle is repeated as often as necessary during the pumping cycle.

INSTALLATION: Air Release Valves must be installed in a vertical position at high points on a piping system. The valve’s inlet must face downward. A shut off valve should be installed below each valve in the event servicing is required. A drain line is recommended, as the valve may “spit” a small amount of fluid during venting.

To vent air quickly during initial start up, remove the ½ inch pipe plug in the cap of the air vent.

CAUTION: If TFE tape is used to form the seal on the inlet piping, keep the excess tape from entering the valve. The excess tape could interfere with proper venting or sealing of the valve.

MAINTENANCE: No regular maintenance is necessary; however, periodic inspection for leakage and function can be performed. Close the inlet service valve and slowly remove the ½ inch pipe plug. The water level within the valve should be within 1” of the top of the opened drain plug. If not, the valve may not be functioning properly and the valve should be removed and inspected for wear and/or possible damage from foreign matter.

Replacement parts are available, Contact us.